

STRIDE MS

December Board Presentation

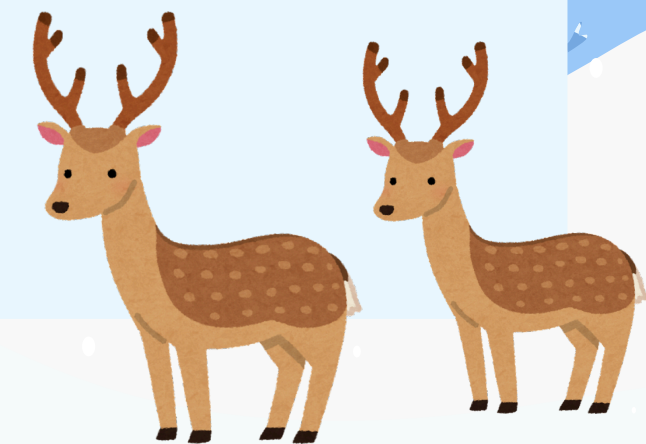
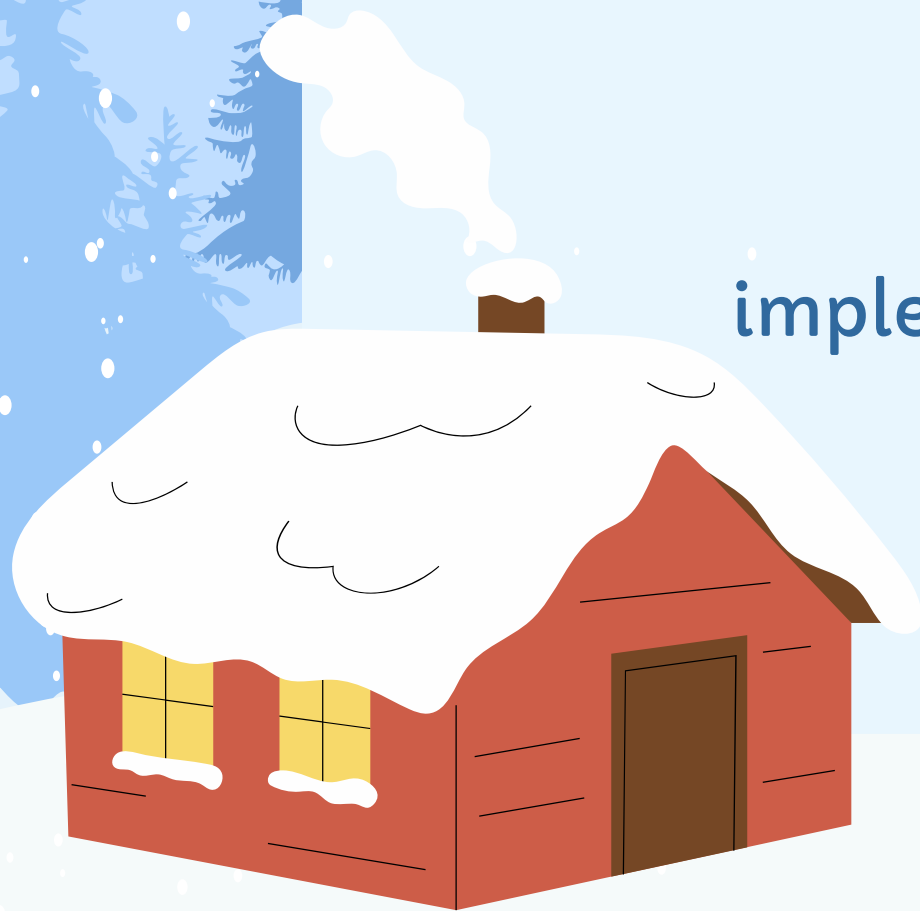


ACADEMICS

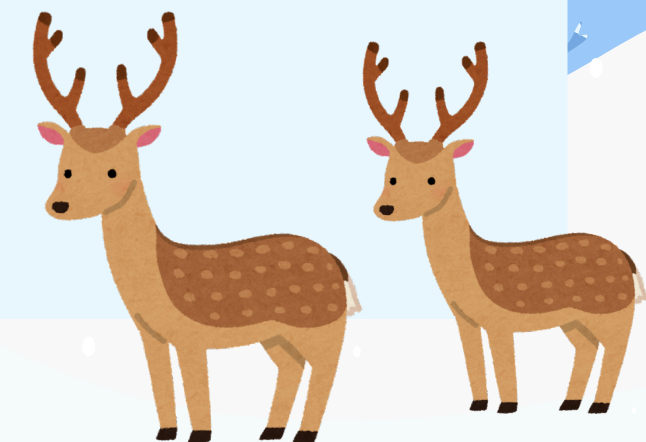
Capti Screener: Completed by 5-8 students who met the threshold. Data will be used to guide Panther Time Groups.

Literacy Screener.

Math: STEM scopes, new curriculum, working on implementation and ensuring staff have correct PD. Xtra Math, premium version. Gives Data on Math Facts.



ACADEMICS



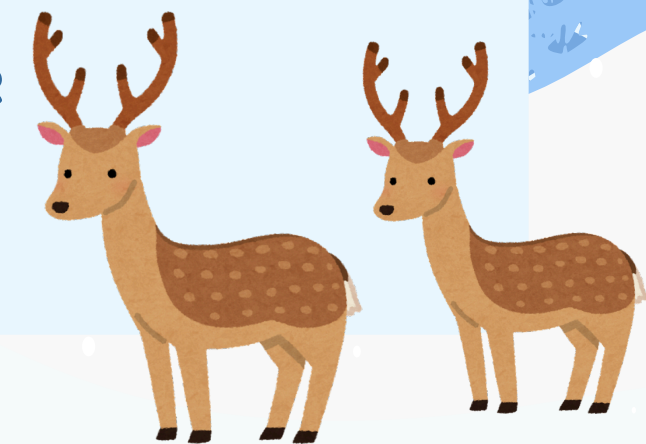
SEL

*Suspensions: Down from September and October, November and December were much lower.

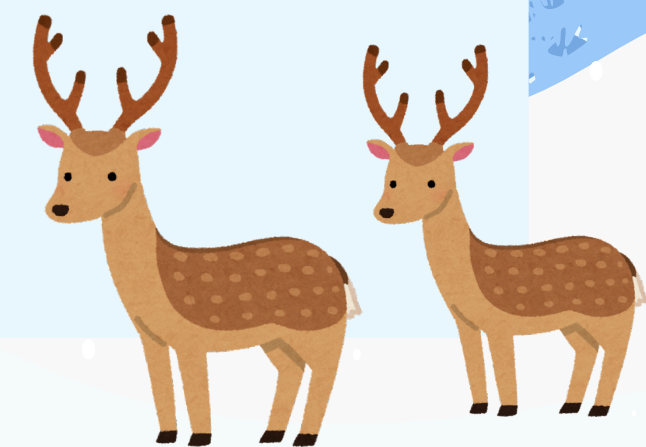
*Student Jobs: Announcement Anchors, Office Helpers, Library Assistants, Cafeteria Helpers, and Hallway Security. Peer Tutors will be starting once weather cooperates.

*YLOT (Young Leaders of Today): Ms. Kym is leading this group, all students could apply, but only 25 will ultimately be chosen.

*Tardy Party for Quarter 2 next Week to Celebrate Student who Make it To Class On Time



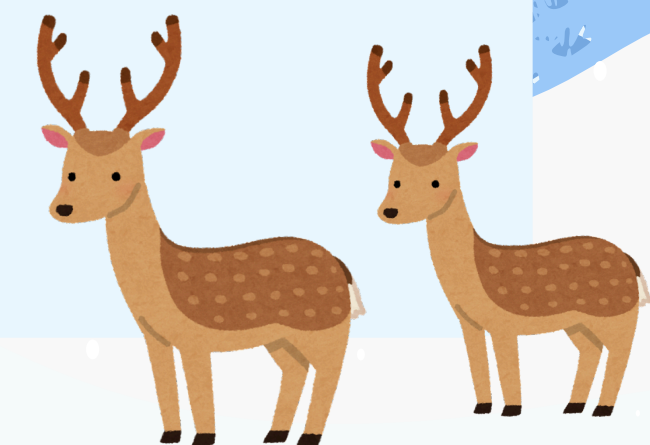
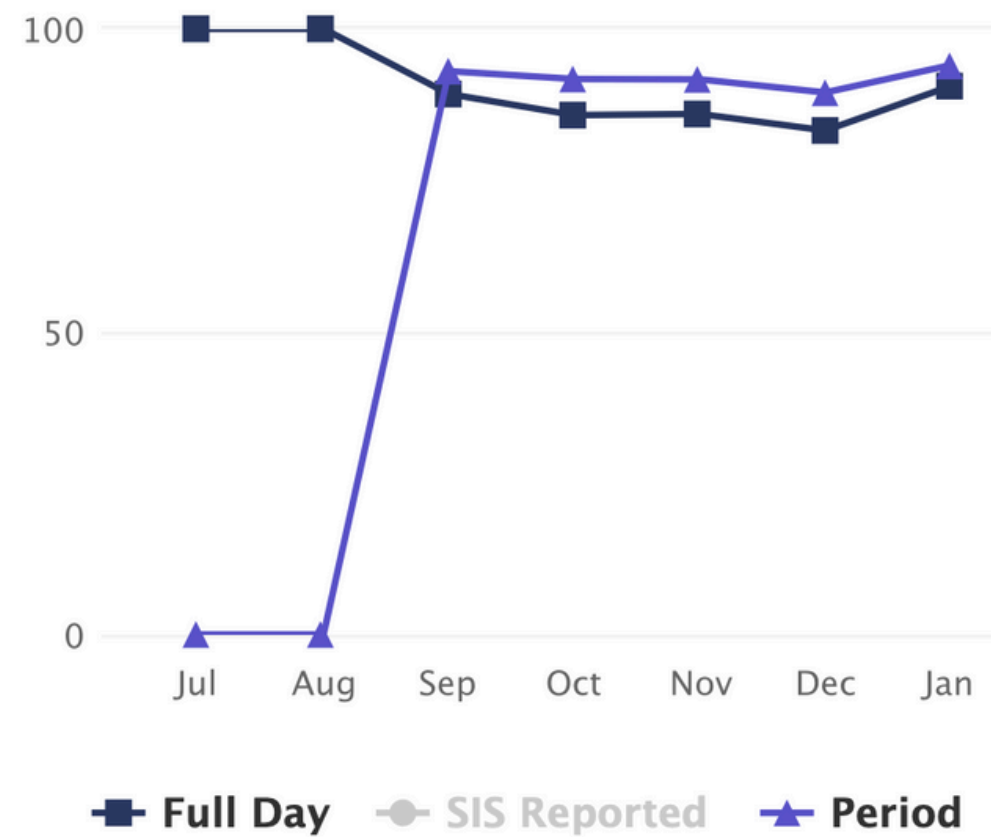
SEL



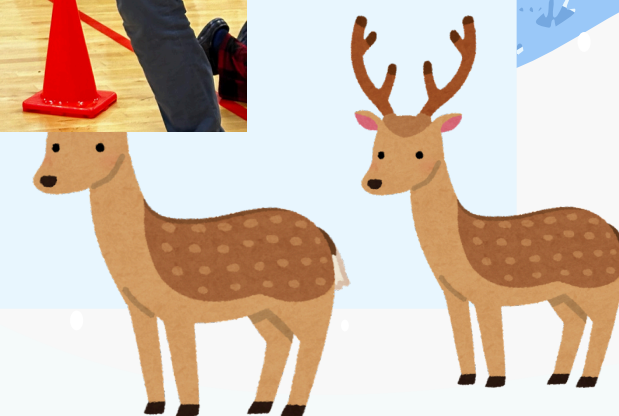
ATTENDANCE

1/12/26, 11:41 AM

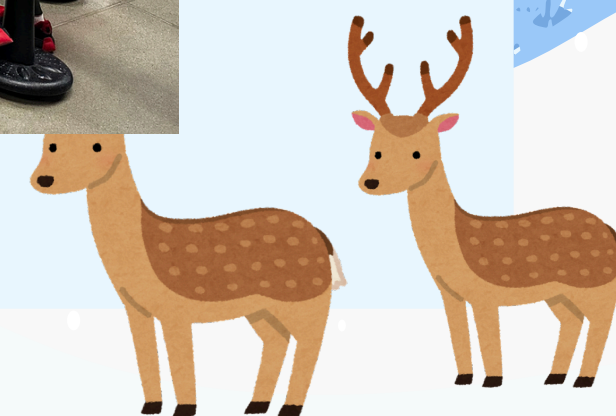
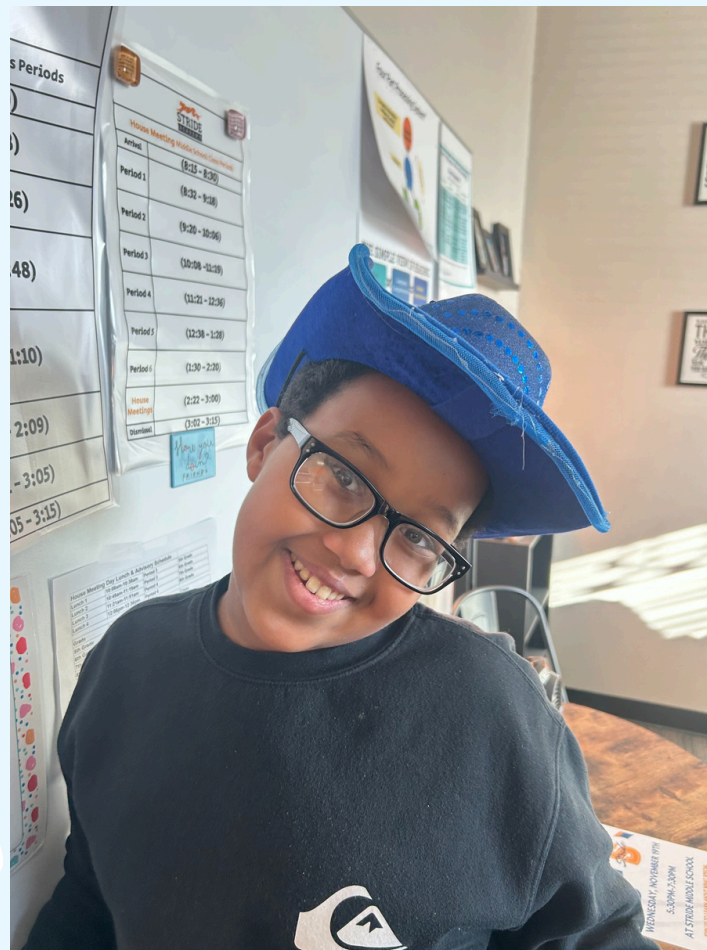
Attendance Rate by Month



RON CLARK



RON CLARK



THANK YOU!

